



FIREFLY

Lifelong memories are only a camp away.

CAMP HAZEN YMCA

204 W Main St. Chester, CT 06412

Office: 860-526-9529

Office@camphazenyumca.org

camphazenyumca.org

A newsletter for first time staff at Camp Hazen YMCA

Issue 2

A Day in the Life for Overnight Camp

Schedule of the day

7:30 am	Reveille
8:00 am	Waiter's Bell
	Morning Meeting & Med Call
8:15 am	Breakfast
9:00 am	Cabin Clean-Up & Morning Circle
9:40 am	Skill Class 1
11:00 am	Skill Class 2
12:15 pm	Waiter's Bell
12:30 pm	Lunch
	Mail Delivery + Package Pick up
1:15 pm	Siesta
2:15 pm	Skill Class 3
3:35 pm	Skill Class 4
4:50 pm	Beach Party
	Dickinson's General Store Open
5:40 pm	Summer Summit - Village Meeting
	Waiter's Bell
6:00 pm	Dinner
7:00	Med Call
7:15 pm	Evening Program
8:30 pm	Shower
	Cabin Chat
9:30 pm	Taps

The Villages:



The Grove:

Juniper &

Maple

Grades 3-7



The Canopy:

Tamarack &

Spruce

Grades 7-9



Oak Village

Grades 9-10



Lingo Llama: Each village is its own entity but we tend to group them by the younger, older and oldest. Therefore, The Grove is our two youngest villages, Juniper and Maple, and The Canopy are the older age villages, Tamarack and Spruce. Oak Village is for campers entering 10th grade and is set farther in the woods, where the campers and staff sleep in platform tents.

A Day in the Life for Day Camp

DC Schedule of the day

7:30 am	Before Care
8:00 am	Breakfast
9:00 am	Drop off
9:15 am	All Camp Assembly
	Activity Period 1
Activity Period 2	
11:30 pm	Lunch
12:30 pm	Siesta
	Beach Party
1:30 pm	Activity Period 3 Activity Period 4
3:30 pm	Snack Time
4:00 pm	Pick Up
	After Care
6:00 pm	End of After Care
	Dinner
7:00 pm Evening Activity	Overnight Camp



Groups: Our Day Camp is divided into 3 color groups that help to make every camper's experience age appropriate:

YELLOW—younger campers (grades 1 - 2)

RED - middle campers (grades 3—4)

BLUE - older campers (grades 5 -7)

Examples of shifts:

7:20am — 4:30pm

8:30am — 6:00pm

All of our Day Camp Staff are hired to be group leaders. Some staff may be scheduled as program staff or lifeguards based on their skills and certifications.

Group Leader— These staff stay with the same group of kids all day for the two week session. They take their groups from activity to activity and keep track of the wellbeing of each of their campers throughout the two weeks.

Program Staff— These staff are assigned a color group to be a program staff for. What that means is they help with activities that need extra staff. For example, period 1 they might go on a hike with the Bumble Bees. Period 2 they might help belay the climbing wall with the Daisies. And Period 3 they might help facilitate candle making with the Ducklings! They stick within the color group and help as assigned!

Lifeguard— These staff spend their day down at the waterfront! They typically lifeguard classes like swimming, water trampoline, and boating!

A Day in the Life of our Support Staff!

FOOD SERVICE

As a Kitchen Staff member, you will help prepare over 74,000 meals throughout the summer. You'll also have the opportunity to interact with all of the campers and staff as you serve the meals. We serve all kinds of meals at Hazen, including family style meals, cookouts, pack outs for the woods and even packing out a cabin's breakfast in bed. Remember that working in the kitchen isn't just about the food, there is lots of cleaning and sorting to do as well.



The Dining Hall is the heart of the camp, and the staff that work there are a fun team that helps make camp a special place for everyone.

SAMPLE Schedule

7:00 am	Report to Kitchen Set up Dining Hall Prep B'fast
8:00 am	Day Camp Breakfast
8:15 am	Overnight Camp Breakfast
9:00 am	Clean Dining Hall Wash Dishes
10:15 am	Kitchen Staff Breakfast/Break
10:45 am	General Duties Lunch Preparation Clean Kitchen Clean Showerhouses
11:15 pm	Day Camp Lunch
12:00 pm	Clean up DC Lunch Set up OC Lunch
12:45 pm	Overnight Camp Lunch
1:30 pm	Clean Dining Hall Dishes
2:00 pm	Kitchen Staff Lunch Siesta
4:00 pm	Dinner Preparations Breakfast Preparations
6:00 pm	Overnight Camp Dinner
6:45—8:00pm	Clean up Dining Hall Dishes



MAINTENANCE

We would all be lost without our Maintenance Staff because they hold

camp together. Between fixing things that are broken, cleaning shower houses and taking water to program areas all the details are looked after. Maintenance Staff are always on the move. You see a totally different side of camp than anyone else and everyday is different.

SAMPLE Schedule

7:30 am	Day Camp Trash Pick up Water Coolers to Health Lodge
8:15 am	Breakfast
9:00 am	Water Coolers to all Program Areas Pick up Mail Clean Showerhouses
12:45 pm	Lunch
1:30 pm	Refill Water Coolers General Maintenance Grass cutting Landscaping Fixing repairs Painting
6:00 pm	Dinner
7:00pm	Trash Pick Up Collect Water Coolers

OFFICE

As the Summer Office Staff member, other staff will naturally come to you with office related questions.

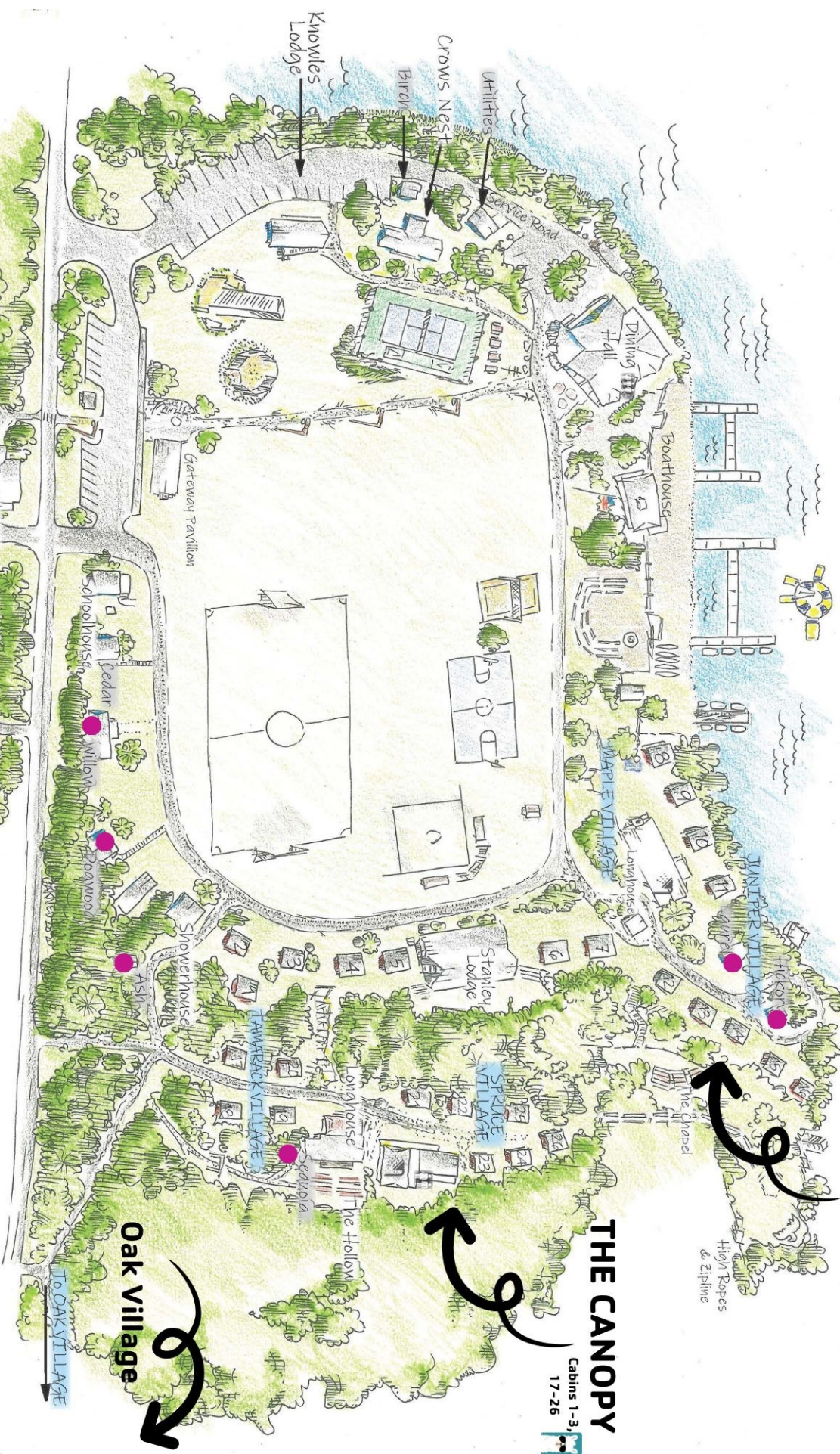
You'll work closely with the year round staff and all the Village Directors. You'll be the front line of Camp, answering the phone calls from nervous parents and greeting them in person at the front desk when they come to drop off a package for their camper, etc



SAMPLE Schedule

8:15 am	Breakfast
9:00 am	Report to Office Pick up Mail
9:30 am	Sort Mail
11:00 am	General Office Work Photocopying Answering phones Filing
12:45 pm	Lunch
1:00 pm	General Office Work Photocopying Answering Phones Tallying Evaluations
3:30 pm	Camp Store Inventory
4:30 pm	Camp Store Open
6:00 pm	Dinner
6:30—9:30 pm	Office Coverage

THE GROVE
Cabins 4-16



THE CANOPY
Cabins 1-3,
17-26

Oak Village

ALPINE VILLAGE
To Alpine Tower, Skate
Park & Archery Range

Maple Lodge
Birch
Crow's Nest
Utilities
Knowles Lodge

Boathouse
Dining Hall
Gateway Pavilion
Maple Village
Lonahouse
Winter Village
High Ropes & Zipline

Stanley Lodge
The Chapel
Snowhouse
Maple Lodge
Birch
Crow's Nest
Utilities
Knowles Lodge

Maple Lodge
Birch
Crow's Nest
Utilities
Knowles Lodge

Maple Lodge
Birch
Crow's Nest
Utilities
Knowles Lodge

Maple Lodge
Birch
Crow's Nest
Utilities
Knowles Lodge

Maple Lodge
Birch
Crow's Nest
Utilities
Knowles Lodge



The cabins listed here are approximately what is in each village. Based on the campers who enroll each session, those cabins sometimes shift between villages.

These dots represent Staff Housing. Staff Housing is typically for our Day Camp Staff, Support Staff, and Leadership Staff.



**the Camp Hazen
YMCA**